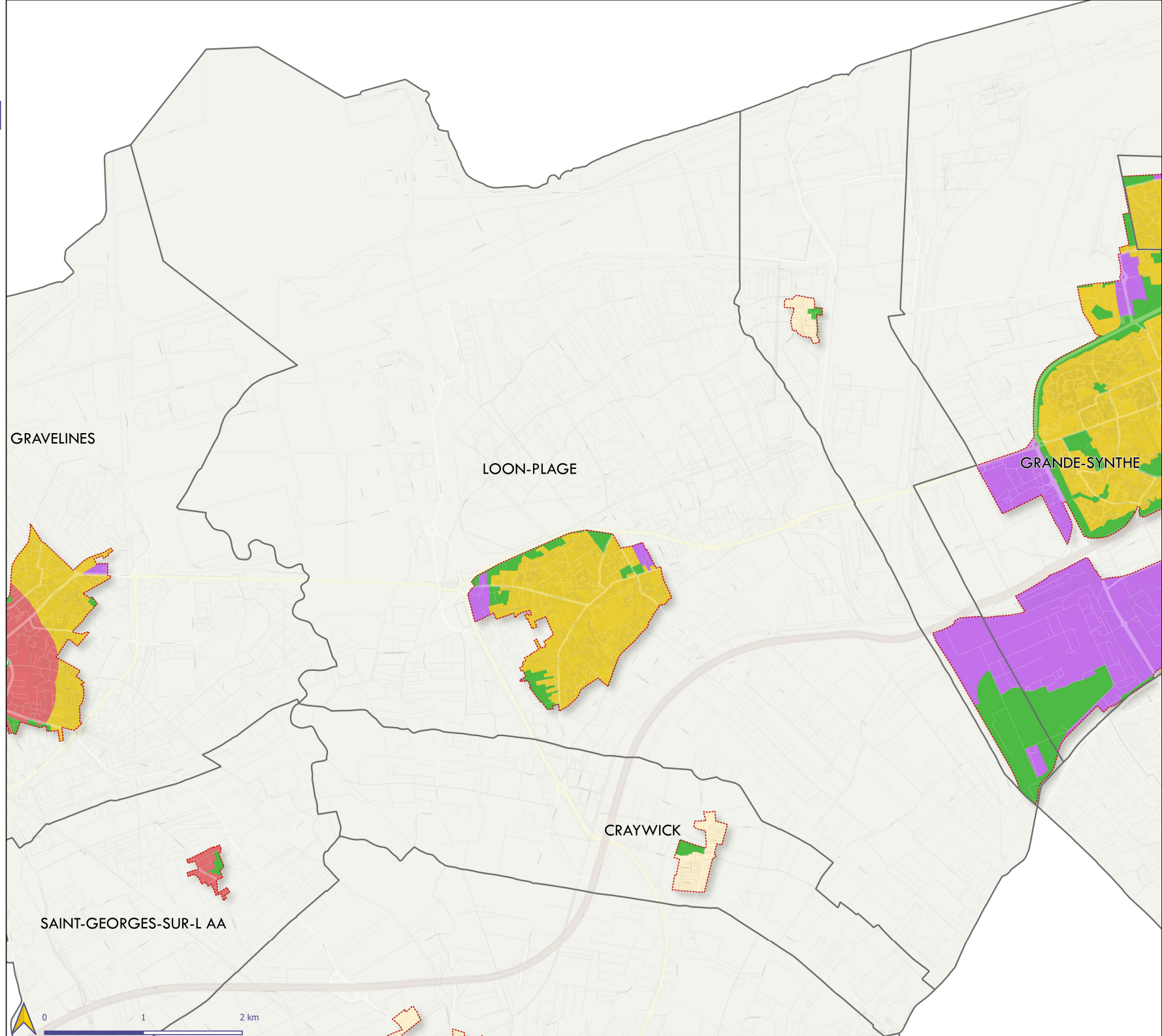
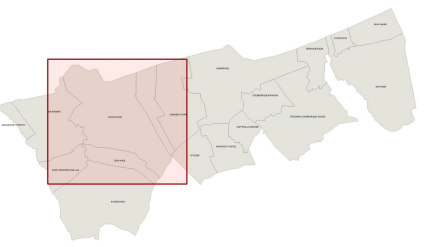








Plan de zonage : PUBLICITE

LOON-PLAGE



-  ZP1 : Le patrimoine naturel
-  ZP2 : Le patrimoine architectural
-  ZP3 : Centre ville et quartiers résidentiels (-10 000 habitants hors UU)
-  ZP4 : Centre ville et quartiers résidentiels (-10 000 habitants dans UU et + 10 000 habitants)
-  ZP5 : Zones d'activités, zone portuaire (-10 000 habitants dans UU et + 10 000 habitants)
-  Limite du territoire aggloméré

